

VENUE  
**SEEK**

*By*

AE  
SN  
YC

**GALLERY456**

# Gallery456

## **SPECS**

Ground Floor: 9,000 Sq Ft.

Ceiling Height : 24'

*Additional Levels: For Back of House*

## **FEATURES**

(2) 100 AMP 3 Phase Services available.

Additional power available upon request

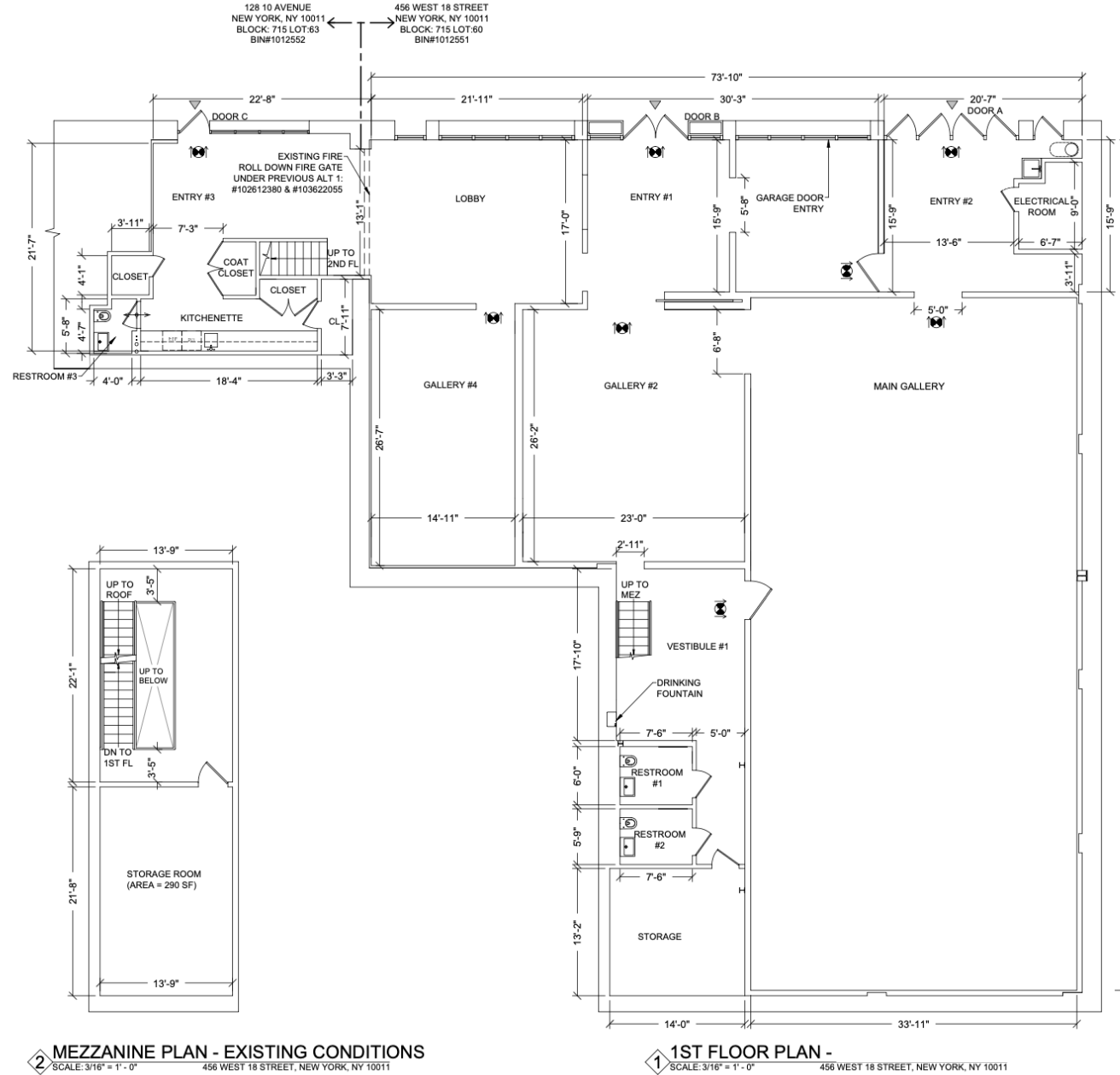
Garage Door Feature w/ Brandable

Frontage on Glass and Facade


**456 W 18<sup>th</sup> St**

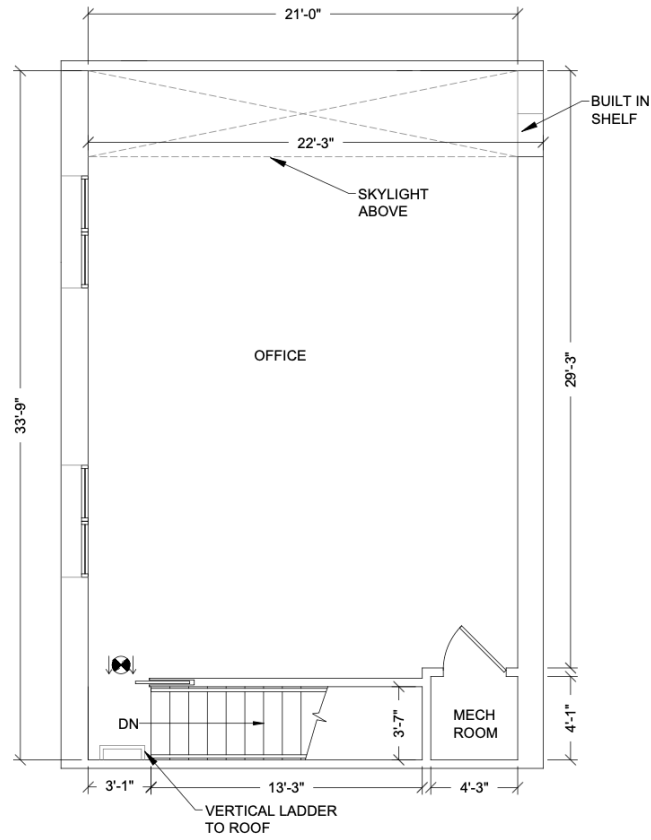


# Floor Plan – Ground Floor



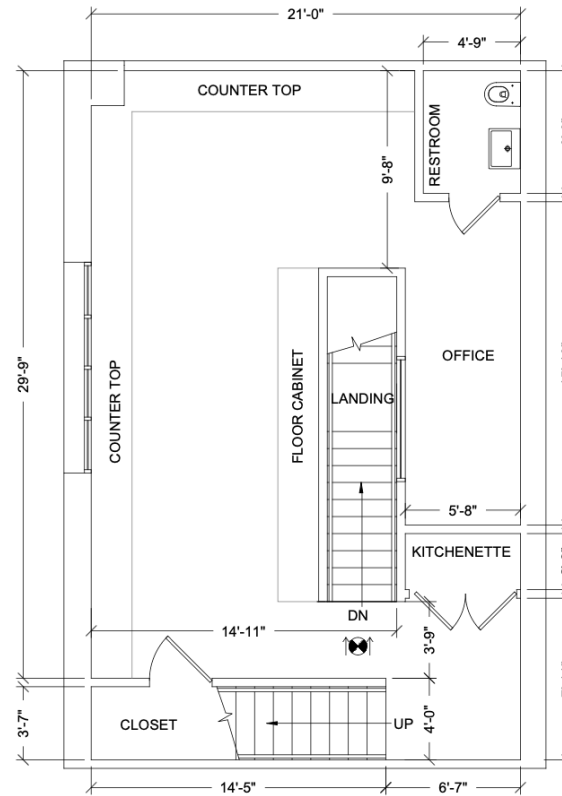
# Floor Plan – 2nd and 3rd Floor

LEGEND	
	EXIT SIGN



2 3RD FLOOR PLAN - EXISTING CONDITIONS  
SCALE: 3/8" = 1' - 0"

128 10 AVENUE, NEW YORK, NY 10011



1 2ND FLOOR PLAN - EXISTING CONDITIONS  
SCALE: 3/8" = 1' - 0"

128 10 AVENUE, NEW YORK, NY 10011

















# LOCATION

## FOOT TRAFFIC



Located close to the High Line (7.5 million visitors annually) and Chelsea Market (28,000–35,000 daily visitors).

Chelsea is a popular neighborhood for runners with Hudson River Park / Chelsea Waterside in close proximity

## PUBLIC TRANSPORTATION



14 St / 8 Av



+ 10 min walk

23rd St



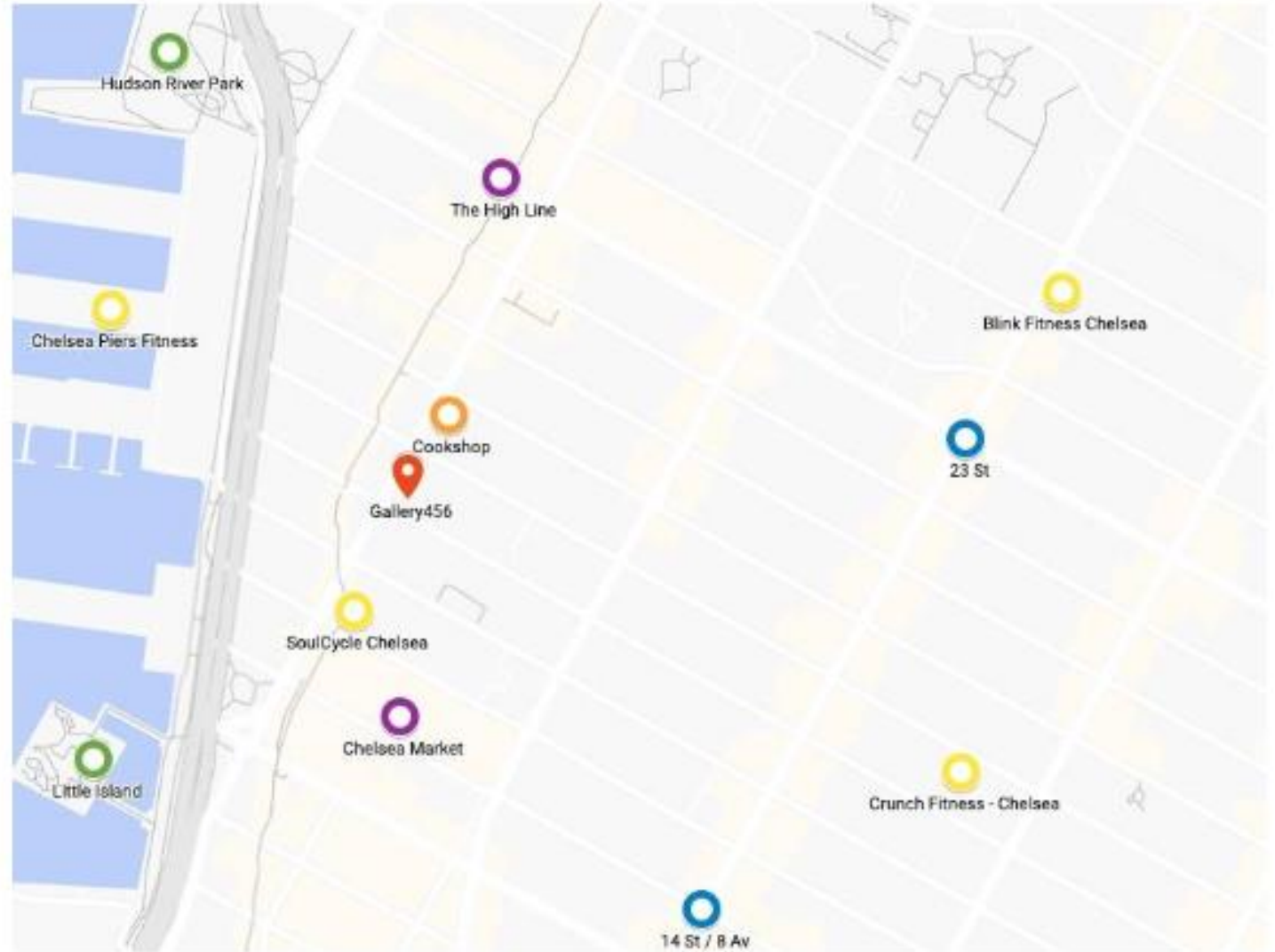
+ 15 min walk



# NEIGHBORHOOD

Key:

-  Gallery456
-  Restaurants
-  Gym / Fitness Classes
-  Parks
-  Transportation
-  High Foot Fall Areas



# CONTACT US

[AES NYC](#) is an event space management and venue sourcing company.

Founded by Dan Kobin, **AES NYC** exclusively manages **Center415** (30,000 sq-ft in Midtown Manhattan), **Annex417** (20,000 sq-ft in Midtown), **Iron23** (17,000 sq-ft in the Flatiron District), **21Greene** (5,000 sq-ft in SoHo), **45Grand** (4,600 sq-ft in SoHo), **718Broadway** (9,500 sq-ft in NoHo)

Looking for a venue outside of our exclusively managed spaces? **AES NYC** also offers **Venue Seek**. **Venue Seek** is a location scouting service that handpicks unique spaces for clients' specific needs.

**CHRISTOPHER FELTS**

DIRECTOR OF OPERATIONS

510.387.7552

chris@aesnyc.com



AES\_NYC



AESNYC



AES\_NYC